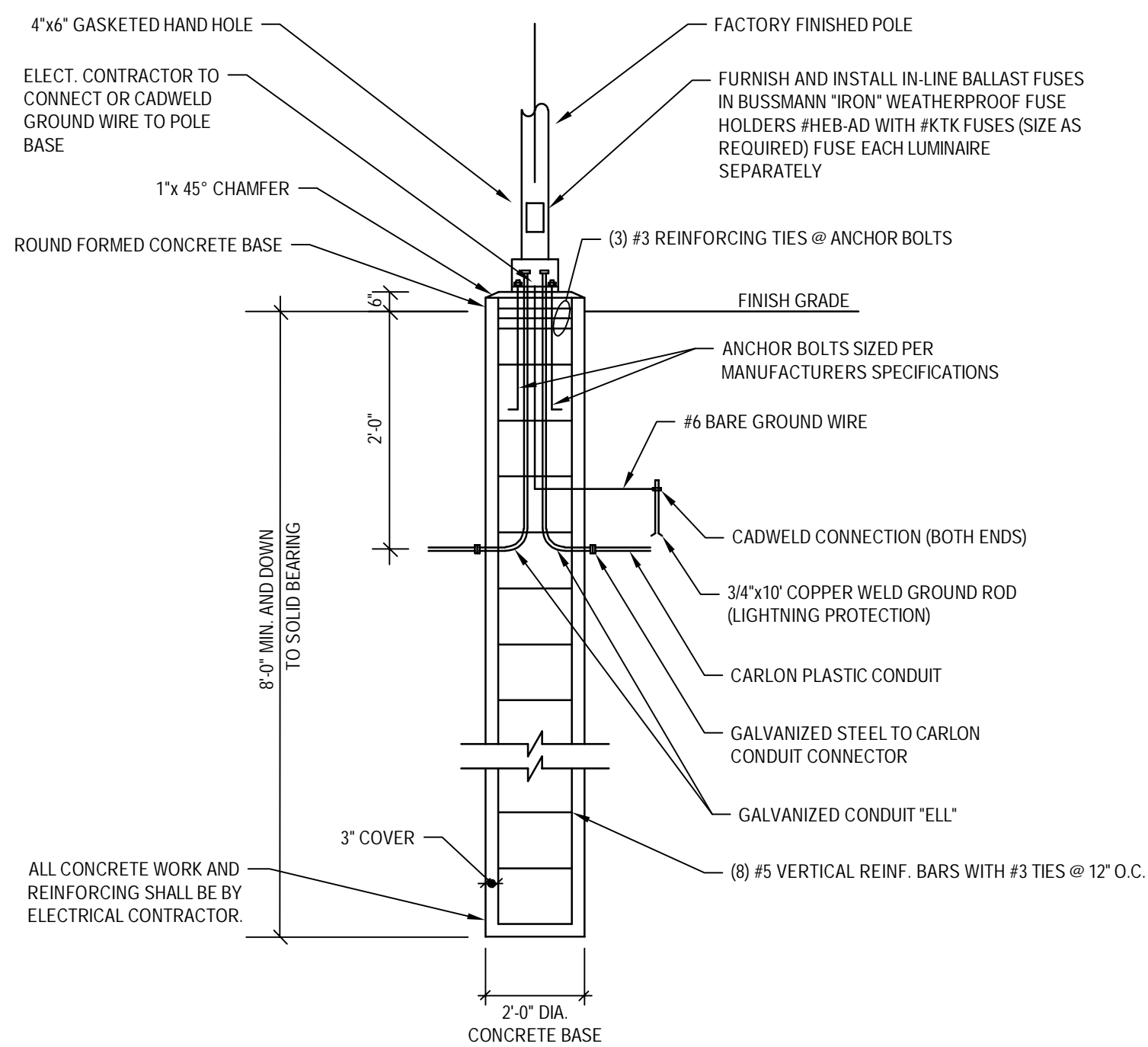


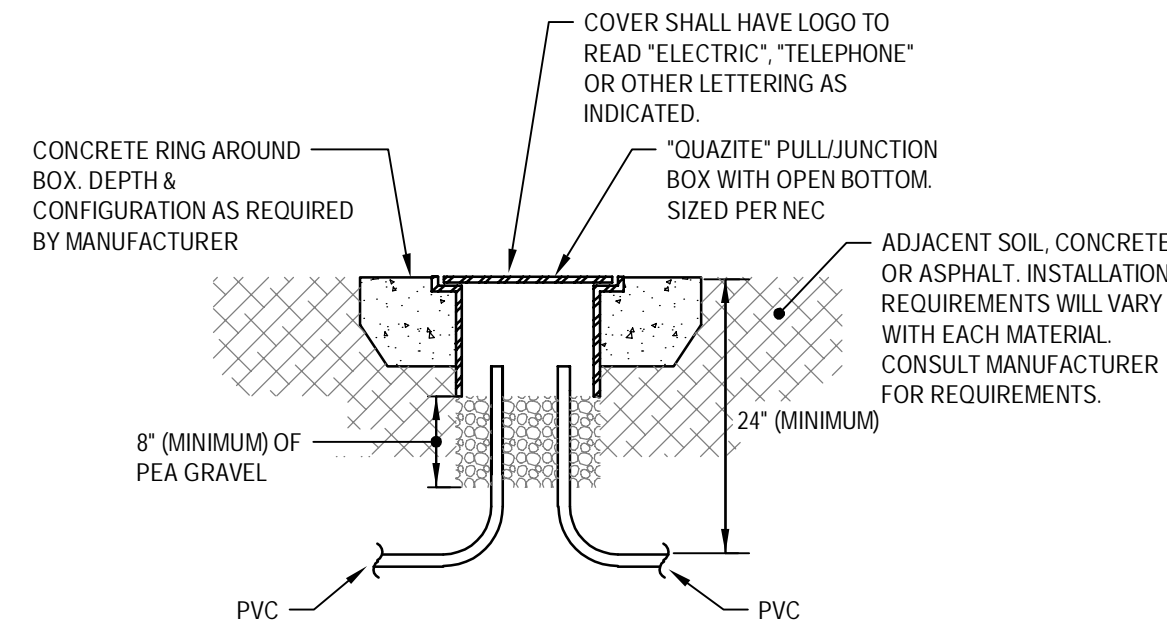
POLE BASE DETAIL - FOR TYPE A
N.T.S.

- NOTES:
- 3500 P.S.I. MIN. 28 DAY COMPRESSIVE STRENGTH CONCRETE WITH GRADE 60 REINFORCING STEEL.
 - IF WATER IS PRESENT IN HOLE. REMOVE BEFORE POURING CONCRETE.
 - FOUNDATION EXCAVATION SHALL BE BY 18" AUGER IN UNDISTURBED OR PROPERLY COMPACTED FILL PER SPECIFICATIONS.
 - FOUNDATION SHALL HAVE A MINIMUM ALLOWABLE END BEARING OF 2000 P.S.F., INCREASE BASE DEPTH AS REQUIRED.
 - THIS POLE BASE DETAIL MUST BE REVIEWED AND APPROVED BY THE STRUCTURAL ENGINEER PRIOR TO INSTALLATION.



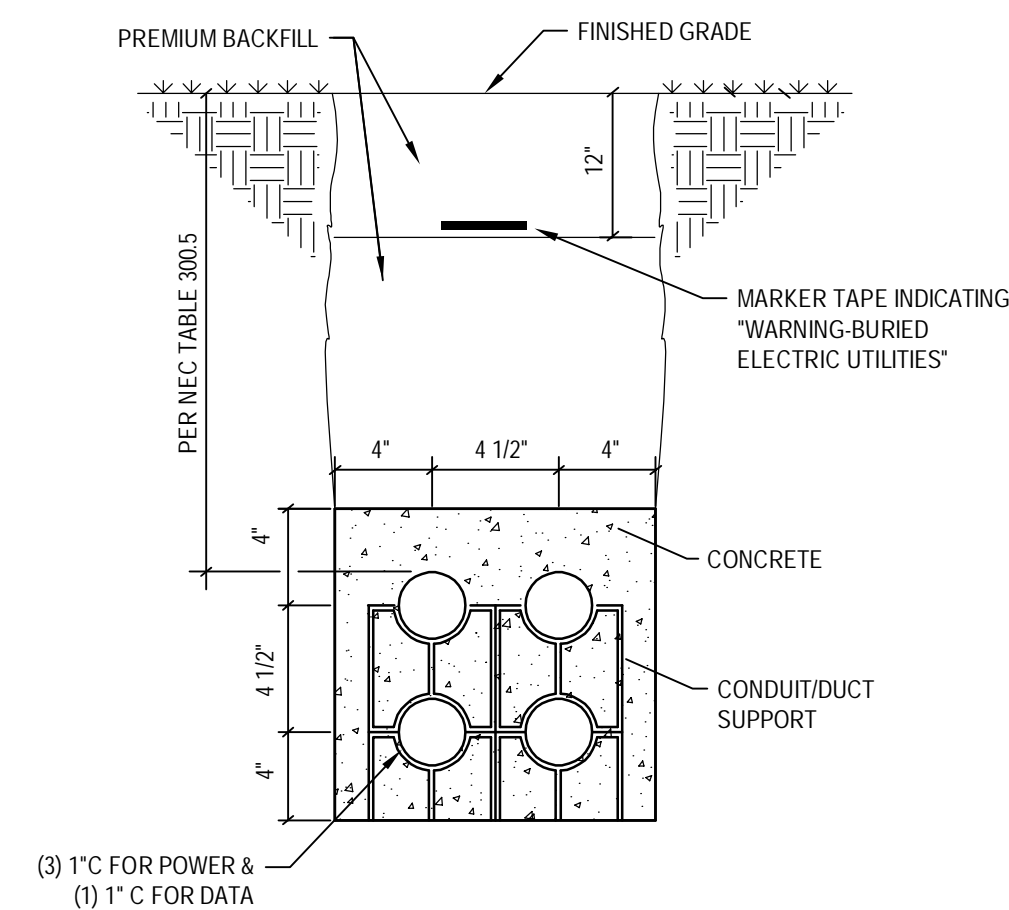
POLE BASE DETAIL - FOR TYPES XA, XB, XD, XE
N.T.S.

- NOTES:
- 3500 P.S.I. MIN. 28 DAY COMPRESSIVE STRENGTH CONCRETE WITH GRADE 60 REINFORCING STEEL.
 - IF WATER IS PRESENT IN HOLE. REMOVE BEFORE POURING CONCRETE.
 - FOUNDATION EXCAVATION SHALL BE BY 24" AUGER IN UNDISTURBED OR PROPERLY COMPACTED FILL PER SPECIFICATIONS. USE TEMPORARY SLEEVE IF REQUIRED.
 - FOUNDATION SHALL HAVE A MINIMUM ALLOWABLE END BEARING OF 2000 P.S.F. (TO BE VERIFIED BY ON-SITE GEOTECH) INCREASE BASE DEPTH AS REQUIRED.



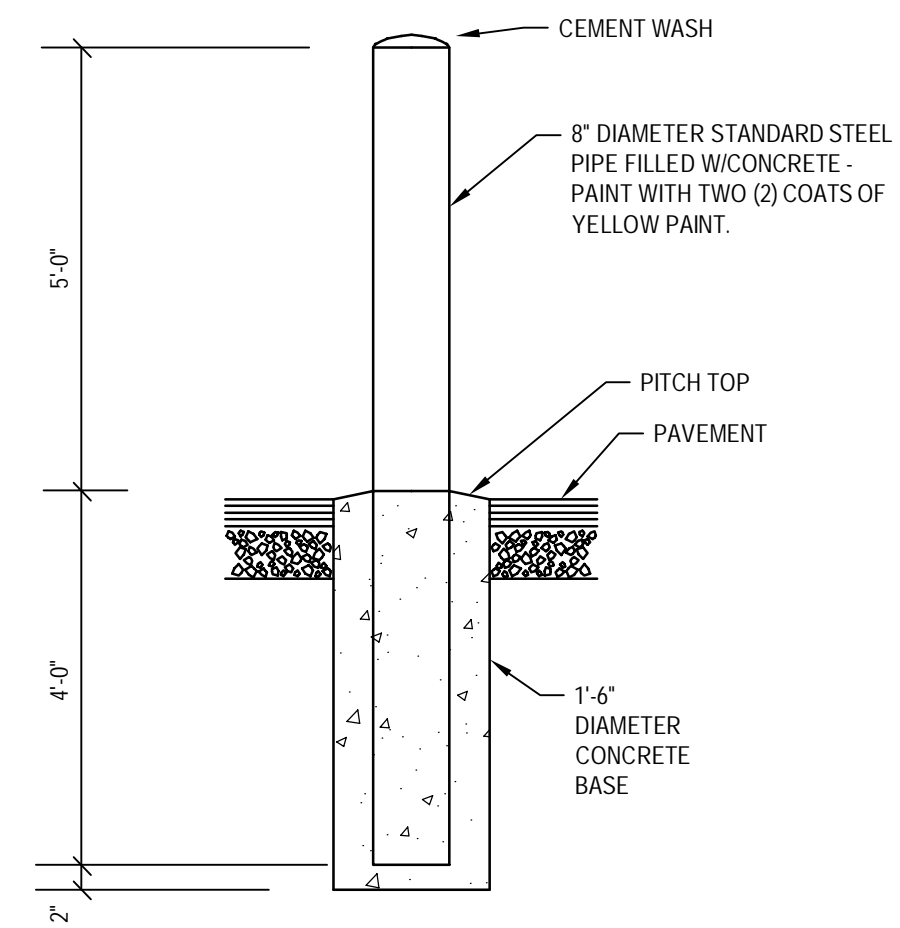
IN-GRADE PULL/JUNCTION BOX DETAIL
N.T.S.

- NOTES:
- SPLICES SHALL BE AVOIDED WHERE POSSIBLE. WHERE REQUIRED, SPLICES SHALL BE MADE WITH WATERPROOF CONNECTORS.
 - CONCRETE ENCASEMENT TO BE 3,000 PSI MINIMUM.
 - DO NOT LOCATE BOXES IN HIGH VOLUME TRAFFIC APPLICATIONS.
 - COMPACT SOIL AROUND BOX TO MANUFACTURERS RECOMMENDATIONS.
 - THIS DETAIL IS INTENDED TO SHOW GENERAL DESIGN INTENT ONLY. THE ELECTRICAL CONTRACTOR MUST VERIFY ALL INSTALLATION REQUIREMENTS WITH THE MANUFACTURER PRIOR TO THE BIDDING AND INSTALL ALL BOXES ACCORDINGLY.

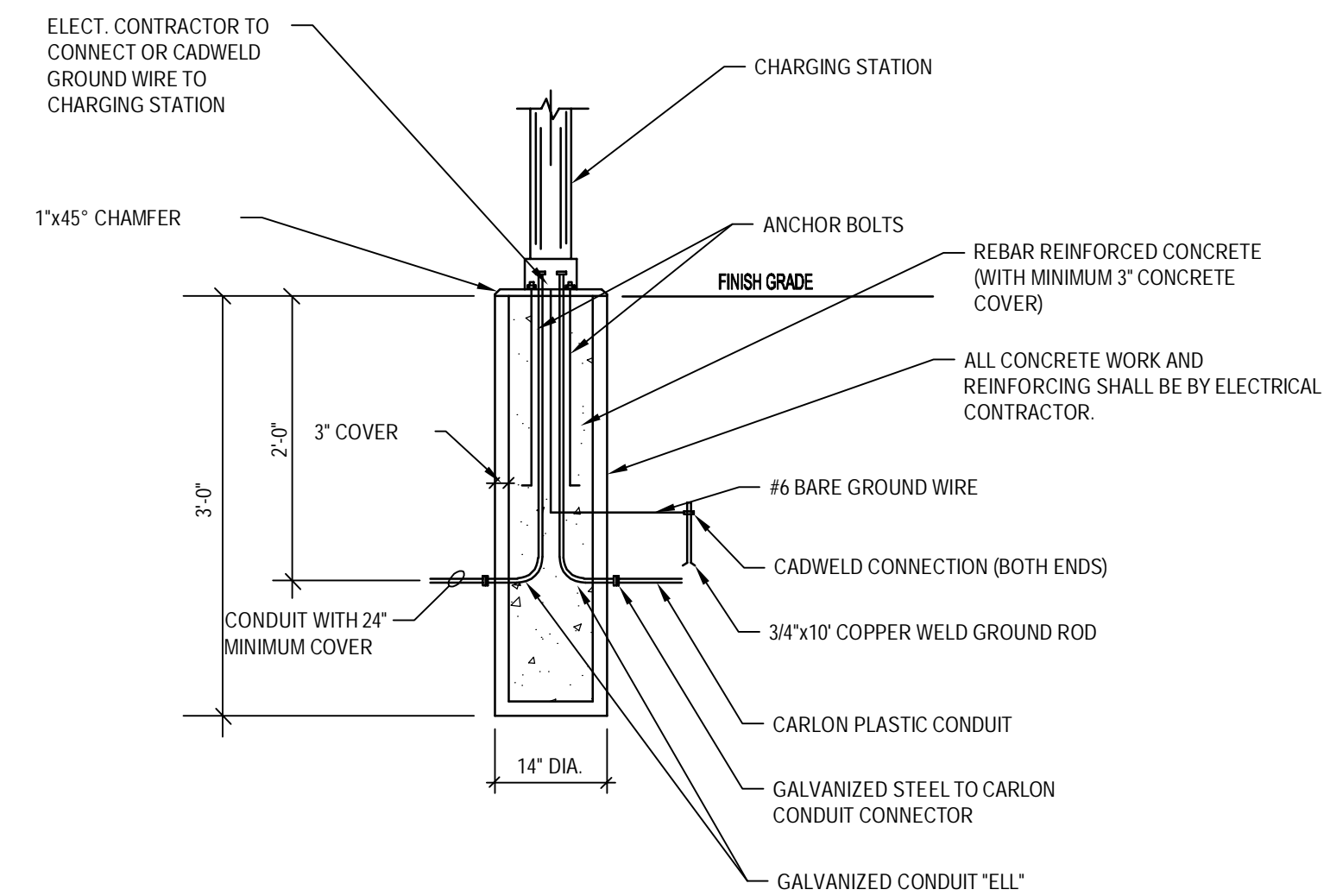


DUCT BANK
N.T.S.

- NOTES:
- FURNISH AND INSTALL CONDUIT SYSTEM PER NEC REQUIREMENTS.
 - REFERENCE SITE ELECTRICAL NOTES FOR SOIL COMPACTION REQUIREMENTS.
 - REFERENCE SITE PLAN FOR PROPOSED ROUTING.

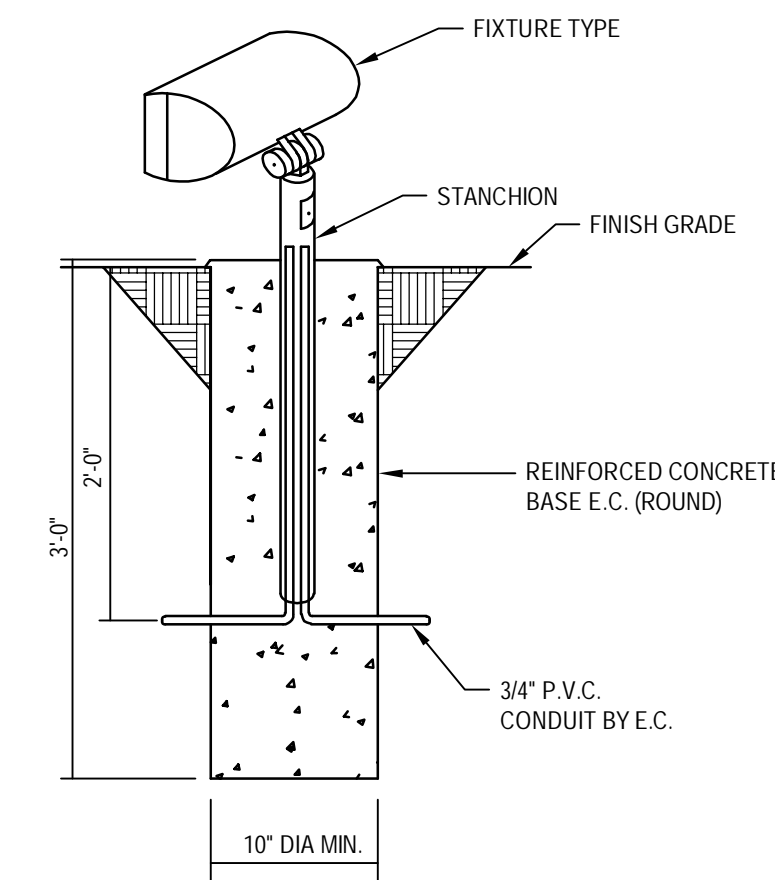


BOLLARD DETAIL
N.T.S.



CHARGING STATION BASE DETAIL
N.T.S.

- NOTES:
- COORDINATE EXACT REQUIREMENTS WITH MANUFACTURER PRIOR TO BID



FLOODLIGHT BASE DETAIL
N.T.S.

SITE ELECTRICAL NOTES

- EXACT LOCATIONS OF PARKING LOT LIGHTING STANDARDS SHALL BE COORDINATED WITH APPROVED ARCHITECTURAL SITE PLAN AND PARKING LOT LAYOUT.
- ALL LIGHTING FIXTURES PROJECTING TOWARD ADJACENT RESIDENTIAL AREAS MUST BE PROPERLY SHIELDED TO PREVENT LIGHT SOURCE FROM EXTENDING INTO THIS AREA.
- THE LUMINAIRE MANUFACTURER SHALL PROVIDE COMPUTER GENERATED POINT BY POINT FOOTCANDLE CALCULATIONS ALONG WITH THEIR SHOP DRAWINGS SUBMITTAL. THE FORMAT OF THIS POINT BY POINT CALCULATION SHALL BE IN THE FORM OF AN OVERLAY OF THE ENTIRE PARKING AREA WITH CALCULATED POINTS 25 FEET ON CENTER.
- ALL SITE LIGHTING POLES SHALL BE DESIGNED TO WITHSTAND 100 MPH WINDS WITH A 1.3 GUST FACTOR.
- ELECTRICAL CONTRACTOR SHALL INSTALL EACH LIGHTING POLE PLUMB AND TRUE. ELECTRICAL CONTRACTOR SHALL PROVIDE NECESSARY LEVELING SHIMS.
- ELECTRICAL CONTRACTOR SHALL BACKFILL ALL ELECTRICAL TRENCHES USING CLEAN FILL MATERIAL FREE OF ORGANIC CONTAMINATIONS AND OTHER DELETERIOUS MATTER. PLACE BACKFILL MATERIAL IN 6" THICK LAYERS WITH EACH LIFT COMPACTED AT NEAR OPTIMUM MOISTURE CONTENT. COMPACT LIFTS TO ACHIEVE A MINIMUM IN PLACE DENSITY OF 95% OF THE MAXIMUM DENSITY AS DETERMINED BY ASTM D698.
- ELECTRICAL CONTRACTOR SHALL COORDINATE LOCATION OF EASEMENTS, UNDERGROUND UTILITIES, AND DRAINAGE PRIOR TO TRENCHING OR AUGERING FOR POLE BASE. (TYPICAL)
- WHERE THE UTILITY TRANSFORMER AND/OR METERING SHALL BE INSTALLED PAD-MOUNTED IN A PAVED AREA ACCESSIBLE TO VEHICULAR TRAFFIC, THE ELECTRICAL CONTRACTOR SHALL FURNISH AND INSTALL CONCRETE FILLED BOLLARDS AROUND ALL SUCH ELECTRICAL EQUIPMENT. PROVIDE BOLLARDS AT ALL ACCESSIBLE CORNERS OF EQUIPMENT WITH ADDITIONAL BOLLARDS IN BETWEEN AS REQUIRED FOR A MAXIMUM SPACING OF 4'-0" O.C. VERIFY EXACT LOCATION OF BOLLARDS WITH ENGINEER PRIOR TO INSTALLATION. MAINTAIN ALL REQUIRED CLEARANCE AND ACCESS REQUIREMENTS PER POWER COMPANY, CODE AND LOCAL AUTHORITY HAVING JURISDICTION.

STOW LIBRARY PARKING LOT

STOW-MUNROE FALLS
PUBLIC LIBRARY

35112 DARROW ROAD, STOW, OHIO

SHEET ISSUE: FOR BIDS
ISSUE DATE: 12-20-23

MARK	DATE	DESCRIPTION

PROJECT NO: 2023-0668
ORIGINAL DATE:

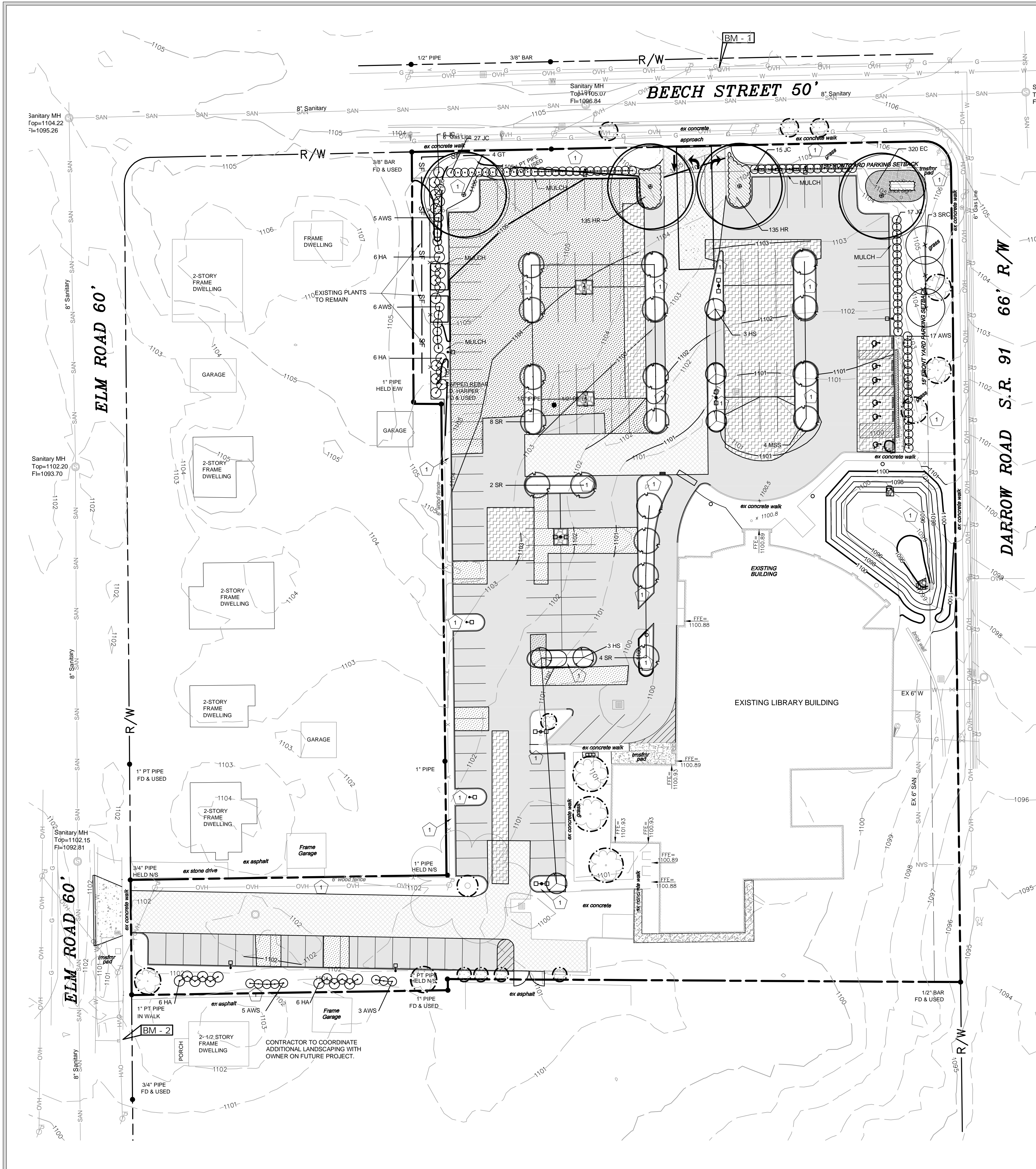
GENERAL NOTES
AND DETAILS

E3.1

TBA
Thorson • Baker + Associates
CONSULTING ENGINEERS
3030 West Streetsboro Road
Richfield, Ohio 44286
(330) 659-6688 Ph.
(330) 659-6675 Fax

not published: all rights reserved

\\bs-projects\23\2023\2023-0668\TBA-Cad-Rev\TMEPT\2023-0668 E3.0.dwg, 12/20/2023 1:23:57 PM



- PLANTING NOTES AND SPECIFICATIONS**
- THESE DOCUMENTS ARE MEANT TO SERVE AS A GUIDE FOR CONSTRUCTION. MODIFICATIONS TO THE DESIGNS MAY BE REQUIRED TO ACCOMMODATE VARYING FIELD CONDITIONS OR MODIFIED PLANT ARRANGEMENTS. MODIFICATIONS MUST BE APPROVED BY CITY OF STOW LANDSCAPE ARBORIST.
 - CONTRACT SHALL CONSIST OF TOTAL UNITS AUTHORIZED BY OWNER.
 - UNLESS OTHERWISE DIRECTED, CONTRACTOR SHALL PROTECT ALL TREES SCHEDULED TO REMAIN. FENCE THOSE WHICH MAY RISK DAMAGE FROM CONSTRUCTION EQUIPMENT OR WORK. ALL HONEY LOCUST STREET TREES TO REMAIN AND MAY NOT BE REMOVED.
 - ALL TREES WHICH ARE TO BE REMOVED SHALL BE REMOVED IN A MANNER WHICH WILL NOT INJURE PLANT MATERIAL. SCHEDULED TO REMAIN. STUMPS ARE TO BE COMPLETELY REMOVED AND HAULED OFF SITE. NO BURIAL OR BURNING WILL BE PERMITTED. STUMPS WHICH ARE NOT IN THE PATH OF PROPOSED PAVEMENTS, STRUCTURES OR OTHER SIMILAR IMPROVEMENTS MAY BE GROUND IN PLACE.
 - THE GENERAL CONTRACTOR WILL REMOVE AND PLACE 9" OF TOPSOIL. TOPSOIL SHALL CONTAIN NO ROCKS AS SPECIFIED. THE LANDSCAPE CONTRACTOR IS RESPONSIBLE FOR ALL FINE GRADING RELATING TO HIS WORK (WHEN APPLICABLE).
 - TREES & VEGETATION WITHIN LIMITS OF CONSTRUCTION SHALL BE CLEARED AND GRUBBED UNLESS NOTED OTHERWISE.
 - BEFORE PLANTING, DETERMINE LOCATION OF ALL UNDERGROUND UTILITIES AND PERFORM WORK IN A MANNER WHICH WILL AVOID POSSIBLE DAMAGE. HAND EXCAVATE, AS REQUIRED, IF CONDITIONS DETRIMENTAL TO PLANT GROWTH ARE ENCOUNTERED, SUCH AS RUBBLE FILL, ADVERSE DRAINAGE CONDITIONS, OR OBSTRUCTIONS, NOTIFY LANDSCAPE ARCHITECT BEFORE PLANTING.
 - ALL PLANT MATERIAL QUALITY AND SIZES WILL CONFORM TO THE CURRENT ISSUE OF THE AMERICAN STANDARD FOR NURSERY STOCK PUBLISHED BY THE AMERICAN ASSOCIATION OF NURSERYMEN. PLANT MATERIAL MUST BE SELECTED FROM NURSERIES THAT HAVE BEEN INSPECTED AND CERTIFIED BY STATE PLANT INSPECTORS. NOMENCLATURE WILL BE IN ACCORDANCE WITH HORTUS 111 BY L.H. BAILEY.
 - SEE THIS SHEET FOR PLANT MATERIAL LIST. TOTAL QUANTITIES OF MATERIALS SHOWN ON LANDSCAPE DRAWINGS SHALL TAKE PRECEDENCE OVER QUANTITIES SHOWN ON THE PLANT MATERIAL LIST. CONTRACTOR SHALL BE RESPONSIBLE FOR VERIFYING ALL QUANTITIES ON THE PLANTING PLAN.
 - REPORT ANY DISCREPANCIES IN THE PLANS TO THE LANDSCAPE ARCHITECT PRIOR TO START OF CONSTRUCTION. LANDSCAPE ARCHITECT IS TO BE THE AUTHORITY FOR INTERPRETATION OF PLANS) AND QUALITY OF WORK.
 - THE LANDSCAPE ARCHITECT RESERVES THE RIGHT TO INSPECT THE PLANTS EITHER AT THE NURSERY OR AT THE JOB SITE PRIOR TO PLANTING. CONTRACTOR SHALL LABEL AT LEAST ONE PLANT OF EACH VARIETY WITH A SECURELY ATTACHED WATERPROOF TAG BEARING LEGIBLE DESIGNATION OF THE BOTANICAL AND COMMON NAMES.
 - CONTRACTOR SHALL NOT MAKE PLANT SUBSTITUTIONS. IF SPECIFIED LANDSCAPE MATERIAL IS NOT OBTAINABLE, SUBMIT PROOF OF NON-AVAILABILITY TO LANDSCAPE ARCHITECT TOGETHER WITH A PROPOSAL FOR USE OF EQUIVALENT MATERIAL.
 - WHERE FORMAL ARRANGEMENTS OR CONSECUTIVE ORDER OF TREES OR SHRUBS ARE SHOWN, SELECT STOCK FOR UNIFORM HEIGHT AND SPREAD TO ASSURE SYMMETRY IN PLANTING.
 - DO NOT BEND OR BIND THE TREES OR SHRUBS IN SUCH A MANNER AS TO DAMAGE BARK, BREAK BRANCHES OR DESTROY NATURAL SHAPE. PROVIDE PROTECTIVE COVERING DURING DELIVERY. DO NOT DROP BALLED AND BURLAPPED STOCK DURING DELIVERY. IF PLANTING IS DELAYED MORE THAN 6 HOURS AFTER DELIVERY, SET TREES AND SHRUBS IN SHADE, PROTECT FROM WEATHER AND MECHANICAL DAMAGE, AND KEEP ROOTS MOIST BY COVERING WITH MULCH, BURLAP OR OTHER ACCEPTABLE MEANS OF RETAINING MOISTURE.
 - PREPARATION OF PLANTING BEDS. LOOSEN SUBGRADE TO A MINIMUM DEPTH OF 6". REMOVE STONE OVER 1" IN ANY DIMENSION, STICKS, STONES, RUBBISH AND OTHER EXTRANEIOUS MATTER. ALL BEDS SHALL BE EGGED TO FORM A NEAT AND STRAIGHT, WELL-DEFINED CUT EDGE. BUILD ALL PLANT BEDS WITH A TOTAL 12" OF SETTLED PLANTING SOIL. ADD TOPSOIL IN SUFFICIENT QUANTITY TO RAISE BED APPROXIMATELY 2-3" ABOVE FINISHED ADJACENT GRADES. WHERE BED GRADES MEET ADJACENT GRADES, THE EDGE OF THE BED SHALL BE SLOPED GRADUALLY DOWN TO MEET THE ADJACENT GRADE 1" BELOW IT. THE FINISHED MULCH GRADE SHALL BE 1" BELOW THE ADJACENT LAWN OR PAVEMENT GRADE TO PREVENT IT FROM WASHING ONTO THE ADJACENT GRADES. PROVIDE POSITIVE DRAINAGE AWAY FROM ALL BUILDINGS AND AROUND OR AWAY FROM PLANTING BEDS TO PREVENT PONDING OF WATER. DO NOT RAISE BED GRADES, FINISHED GRADES, OR MULCH ABOVE FINISHED FLOOR ELEVATIONS.
 - PLANT MATERIAL SHALL BE SET IN THE CENTER OF AN INDIVIDUAL PIT AND SET PLUMB AND STRAIGHT. ALL PLANTS SHALL BE ADJUSTED TO CONFORM AND ALIGN WITH SURROUNDING PLANTS AND PROPERLY FACED SO AS TO GIVE THE BEST EFFECT. SHRUBS SHALL BE SET TO WITHIN ONE FOOT OF TRUNK OF TREES AND SHRUBS WITHIN PLANTING BED, AND WITHIN 6" OF EDGE OF BED. ALL WIRE BASKETS, TWINE AND BURLAP SHALL BE COMPLETELY REMOVED FROM ALL PLANTS AT THE TIME OF PLANTING. LANDSCAPE CONTRACTOR TO CONTACT CITY OF STOW ARBORIST (SUE MOTT) 330-689-2700 FOR INSTRUCTIONS FOR MATERIAL REMOVAL PRIOR TO BEGINNING INSTALLATION. CONTAINER GROWN PLANTS TO HAVE 3 TO 4 SLICES THROUGH THE ROOTS AND THE ROOTS ON THE OUTSIDE OF THE PLANT BALL WILL BE WORKED FREE FROM THE SOIL OR ROOT MASS MAY BE BUTTERFLIED. BACKFILL PIT LOOSELY UNTIL FULL. BACKFILL SHALL BE SETTLED BY WATERING AND REFILLED AS NECESSARY. DISH TOP OF BACKFILL TO ALLOW FOR MULCHING.
 - PLANTING SOIL FOR BACKFILLING DECIDUOUS PLANTS BEDS OR PITS SHALL CONSIST OF 1/4 ORIGINAL ON-SITE SOIL AND 3/4 SANDY LOAM OR LOAM SOIL AS DEFINED BY U.S.D.A. SOIL CONSERVATION SERVICE. SOIL CLASSIFICATION SYSTEM. THE PLANTING MIXTURE IS TO BE FREE FROM ADMIXTURE OF SUBSOIL, HEAVY CLAY, COARSE SAND, STONES, PLANTS, ROOTS, STICKS, AND ANY OTHER FOREIGN MATERIALS. 95% OF THE PLANTING TOPSOIL SHALL PASS A 20 MIL SIEVE. THE ORGANIC CONTENT SHALL BE 5% TO 12% OF THE TOTAL DRY WEIGHT. ADD GRANULAR SOIL MOIST OR EQUAL TO THE TOPSOIL MIX, APPLIED PER THE MANUFACTURER'S RECOMMENDED RATES FOR THE SIZE AND TYPE OF PLANT MATERIAL SPECIFIED, IF NO IRRIGATION IS TO BE APPLIED. MIX IN APPROPRIATE QUANTITIES OF 20-10-5 "AGRIFORM" SOLID FERTILIZER TABLETS OR EQUAL TO ALL PLANTINGS.
 - IF THE QUALITY OR QUANTITY OF ON-SITE TOPSOIL STOCKPILED IS INSUFFICIENT TO COMPLETE WORK, PROVIDE IMPORTED TOPSOIL. OBTAIN RIGHTS AND PAY ALL COSTS FOR IMPORTED TOPSOIL MATERIAL.
 - PROPOSED TOPSOIL SHALL BE ACCEPTABLE TO THE LANDSCAPE ARCHITECT AND SOILS TESTING FIRM.
 - AFTER PLANTING, PRUNE BRANCHES OF DECIDUOUS STOCK TO REMOVE BROKEN, DAMAGED AND DEAD BRANCHES. DO NOT TRIM THE CENTRAL LEADER. APPLY ANTI-DESICCANT USING POWER SPRAY TO PROVIDE AN ADEQUATE FILM OVER TRUNKS, BRANCHES, STEMS, TWIGS AND FOLIAGE. IF DECIDUOUS TREES OR SHRUBS ARE MOVED IN FULL-LEAF, SPRAY WITH ANTI-DESICCANT AT NURSERY BEFORE MOVING AND AGAIN IN TWO WEEKS AFTER PLANTING.
 - TREE STAKING SHOULD NOT BE REQUIRED FOR ALL PLANTINGS, BUT DETERMINED ON AN INDIVIDUAL TREE BASIS.
 - ANY TREES DAMAGED AND THAT NEED REMOVED MUST BE REPLACED.
 - ALL PLANT MATERIALS AND GROUNDCOVERS TO BE INSPECTED AND APPROVED BY THE LANDSCAPE ARCHITECT BEFORE FINAL ACCEPTANCE OF WORK.
 - ALL PLANT MATERIAL IS TO BE GUARANTEED FOR ONE YEAR FROM THE DATE OF FINAL ACCEPTANCE.
 - THE LANDSCAPE CONTRACTOR IS RESPONSIBLE FOR ALL CLEAN-UP ASSOCIATED WITH ITS CONSTRUCTION PROCEDURE.
 - LANDSCAPED PERCENTAGE OF SITE = 33.6%.
 - SUBSTITUTIONS FOR PLANT MATERIAL MUST BE APPROVED BY STOW'S LANDSCAPE ARBORIST.
 - PLANTING TO OCCUR IN MARCH, APRIL, MAY, SEPTEMBER, OCTOBER, OR NOVEMBER ONLY.

PLANT LIST:

TREES						
KEY	QTY.	BOTANICAL NAME	COMMON NAME	SIZE/COND.	SPACING	NOTES
GT	4	GLEDITIA T.F. INERMIS 'SKYLINE'	SKYLINE HONEYLOCUST	2 1/2" CAL	AS SHOWN	-
HS	6	HIBISCUS SYRIACUS 'PINK GIANT'	PINK GIANT ROSE OF SHARON	2" CAL	AS SHOWN	TREE FORM
MSS	4	MALUS 'SPRING SNOW'	SPRING SNOW CRAB	2" CAL	AS SHOWN	TREE FORM
SR	14	SYRINGA RETICULATA 'IVORY SILK'	IVORY SILK TREE LILAC	2" CAL	AS SHOWN	TREE FORM
SRC	3	SYRINGA RETICULATA 'IVORY SILK'	IVORY SILK TREE LILAC	8" HT	AS SHOWN	CLUMP

SHRUBS						
KEY	QTY.	BOTANICAL NAME	COMMON NAME	SIZE/COND.	SPACING	NOTES
JC	65	JUNIPERUS CHINENSIS 'SEA GREEN'	SEA GREEN JUNIPER	36" HT/B&B	4" O.C.	-
AWS	36	SPIREA X BUMALDA 'ANTHONY WATERER'	ANTHONY WATERER SPIREA	24" HT/B&B	4" O.C.	-
HA	24	HYDRANGEA a. 'INVINCIBELLE SPIRIT'	INVINCIBELLE SPIRIT HYDRANGEA	30" HT/B&B	AS SHOWN	-

GROUNDCOVERS / PERENNIALS						
KEY	QTY.	BOTANICAL NAME	COMMON NAME	SIZE/COND.	SPACING	NOTES
EC	320	EUONYMUS F. 'COLORATUS'	PURPLELEAF WINTERCREEPER	NO 1 CONT	15" O.C.	-
HR	270	HEMEROCALIS 'HAPPY RETURNS'	HAPPY RETURNS DAYLILY	NO 1 CONT	18" O.C.	-

KEYNOTE:
 1. LAWN - SEED DISTURBED AREAS

30' 0' 30' 60' **LANDSCAPE PLAN** 1"=30'

2 WORKING DAYS BEFORE YOU DIG CALL TOLL FREE: 800-362-2764 OHIO UTILITIES PROTECTION SERVICE

STOW LIBRARY PARKING LOT

STOW-MUNROE FALLS PUBLIC LIBRARY

35112 DARROW ROAD, STOW, OHIO

THORSON • BAKER + ASSOCIATES
 CONSULTING ENGINEERS
 3030 West Streetsboro Road (330) 659-6688 Ph.
 Richfield, Ohio 44286 (330) 659-6675 Fax

SHEET ISSUE: FOR BIDS
 ISSUE DATE: 12-20-23

MARK	DATE	DESCRIPTION

PROJECT NO: 2023-0668
 ORIGINAL DATE: 06-23-2016

LANDSCAPE PLAN

L1.0