



Circulation staff processed **152,882** interlibrary loan items.



10,418 people picked up items at the Drive-Up Window.



Cardholders scanned **30,789** items at the self checkout stations.

Items added to the Eclectic Collection in 2023

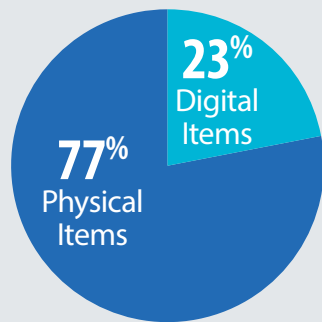
Museum Passes	Film Digitizer
Sensory Items	Metal Detector
Sawhorses	Stud Finder
Mini Sewing Machine	Laser Level
Scanner	35mm Film/Slide
Binoculars	Scanner
Nintendo Gaming Consoles	Trail Camera
Calligraphy Set	Mini Projector



10,398 new items were added to the library's collection in 2023.

NEW

745,757 items were borrowed in 2023.



576,658 Physical Items
169,099 Digital Items

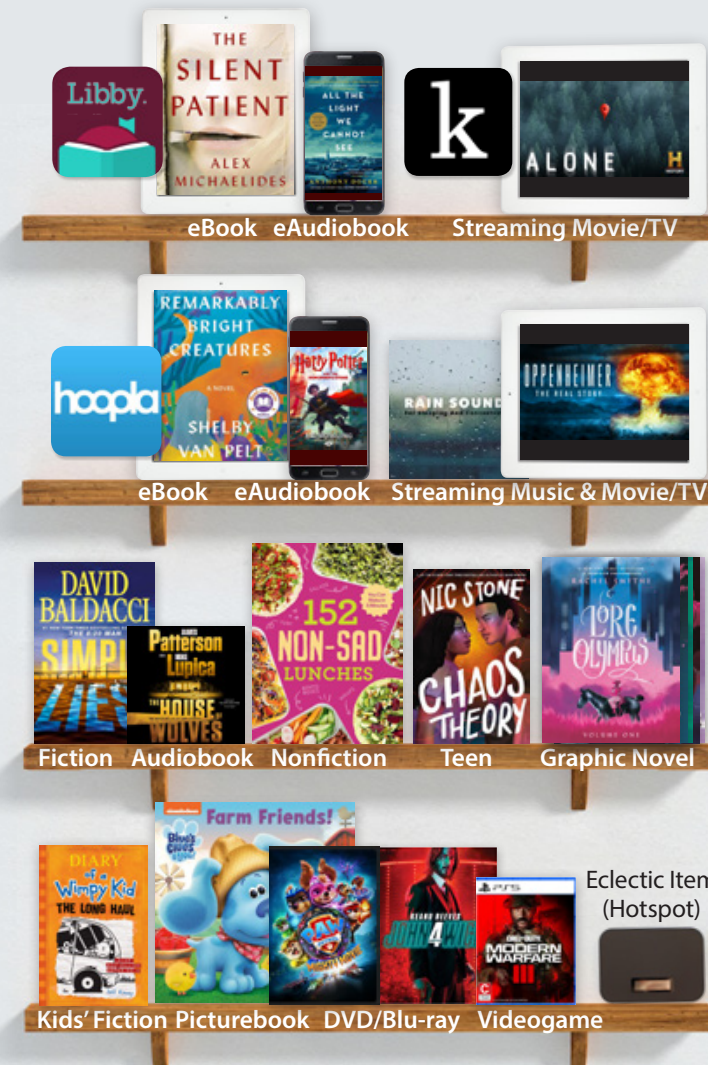
OverDrive **107,407** eBook, eAudiobook, and magazine titles were downloaded.

hoopla **29,958** eBooks, eAudiobooks, comics, music albums, movies, and TV shows were streamed.

freegal **25,428** songs and music videos were downloaded or streamed.

kanopy **4,397** movies and documentaries were streamed.

Flipster **1,909** online magazines were downloaded.

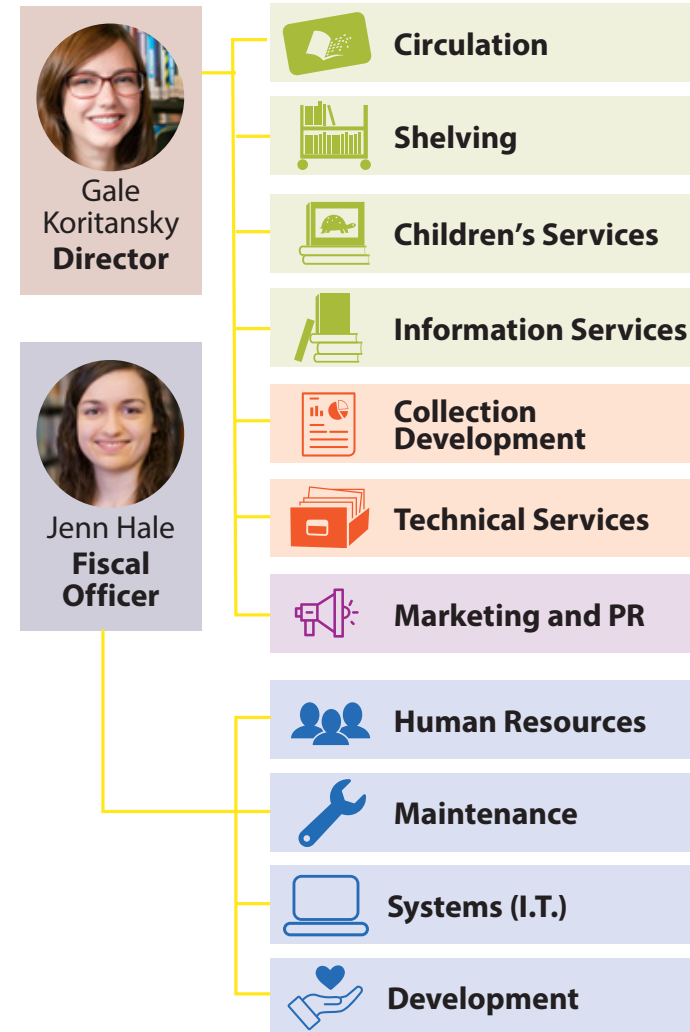


Titles of the most popular items by category

Meet the Board of Trustees

Position		Term Ends
President	Thomas A. Shubert	2027
Vice President	Craig M. Mancuso	2030
Secretary	David R. Renninger	2024
Board Member	Richard P. Bedell, CPA	2029
Board Member	Angela J. Daniel	2025
Board Member	Carla Wyckoff	2026
Board Member	Emily B. Hegner	2028

Meet the Departments



Read. Dream. Connect.

3512 Darrow Rd. • Stow, OH 44224
(330) 688-3295 • www.smfpl.org

2-8-2024

2023

Fast Facts



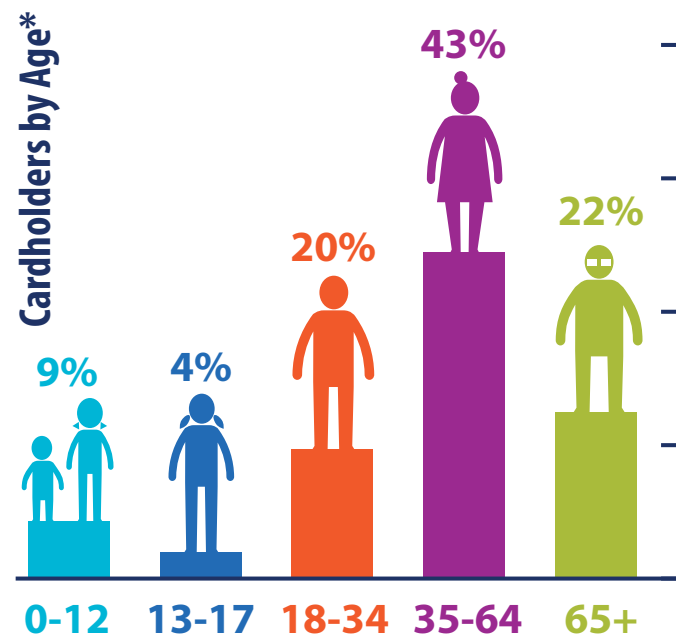
Stow • Munroe Falls
PublicLibrary

Read. Dream. Connect.

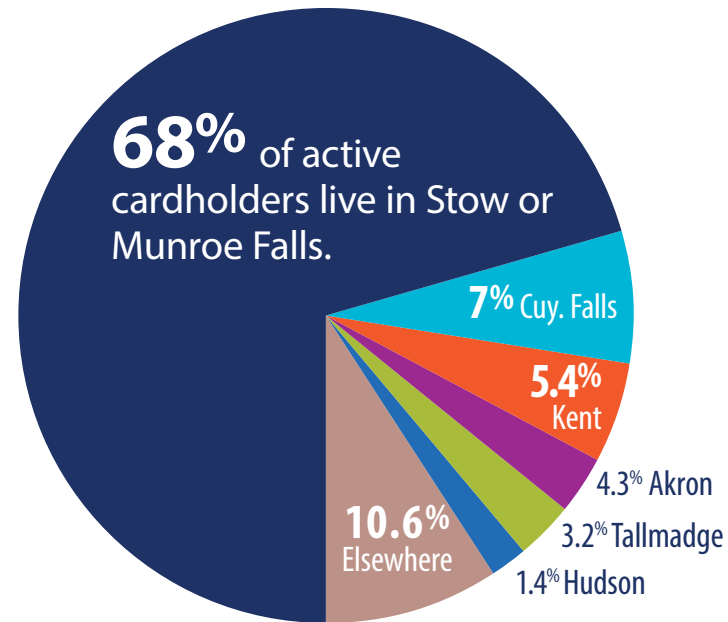


Over **1** out of **3** households in Stow and Munroe Falls (**37%**) had at least one active cardholder in 2023. The library had **147,271** visitors in 2023. On average, **416** people walked through the doors every day the library building was open.

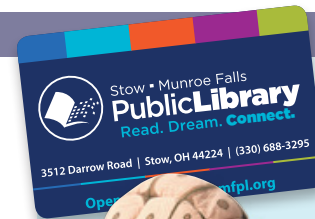
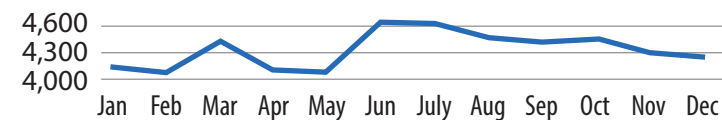
13,337 unique individuals used their library card in 2023.



* Age is unknown for 2% of cardholders



On average, **4,335** unique patrons use their library card each month.



The library welcomed **2,612** new cardholders.

46,170 people attended library programs. **6,779** of these people attended Story Time.

Children's outreach staff read to **5,232** participants at **12** preschools and day cares in Stow and Munroe Falls and sent **5,540** books to these facilities.

Adult outreach staff served **202** patrons at **8** separate facilities (as well as private residences) and circulated **1,122** items.



Meeting rooms were reserved by community groups **978** times.



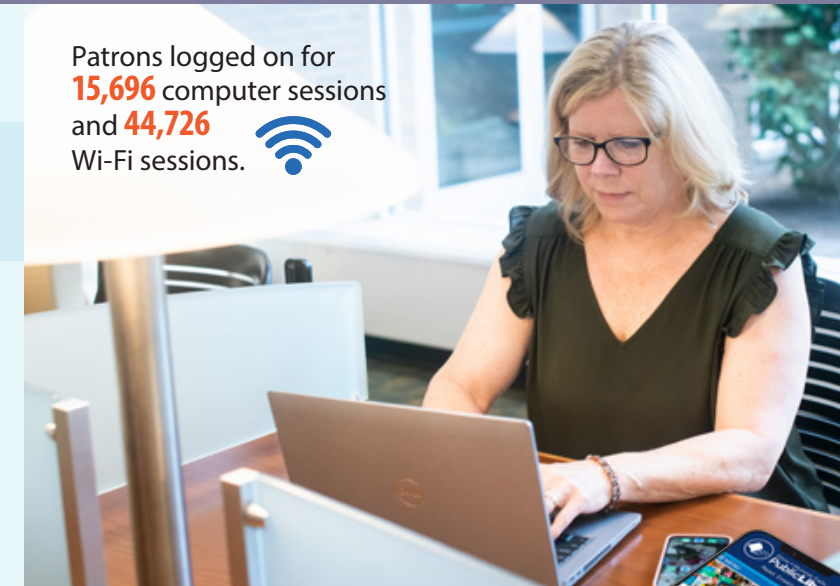
Study rooms were reserved **2,397** times, and at least one room was in use **44%** of the time the library was open.



1,209 passport applications were processed.

Staff notarized **819** documents.

Patrons logged on for **15,696** computer sessions and **44,726** Wi-Fi sessions.



The library's website, www.smfpl.org, was visited **341,534** times by **85,060** unique users.



12,417 people follow the library's Facebook and Instagram pages, and the library's social media posts were seen over **1 million** times.



The Play & Learn Place

Since opening in April 2023, the Play & Learn Place has averaged **3,359** visitors each month.



ALL TOGETHER NOW

Summer Reading by the Numbers | June 1 - August 1, 2023



2,718 people participated:

1,772 kids, 248 teens, and 698 adults

That's **40% more** than last year!



Participants completed **10,105** activities

These included reading, exploring the outdoors, swimming, or making crafts



The library had **356** events between June 1 - August 1, which were attended by **7,610** people

137,299 items were checked out:



106,999 physical items



30,300 digital items



545 people signed up for a library card

Library staff distributed **1,135** free books to kids and teens at community events, thanks to the support of



and an anonymous donor who recognizes the value of getting books into the hands of children.

