



Circulation staff processed **160,684** interlibrary loan items, an average of **440** items per day.



Cardholders scanned **64,647** items at the self checkout stations.

### Items added to the Eclectic Collection in 2024

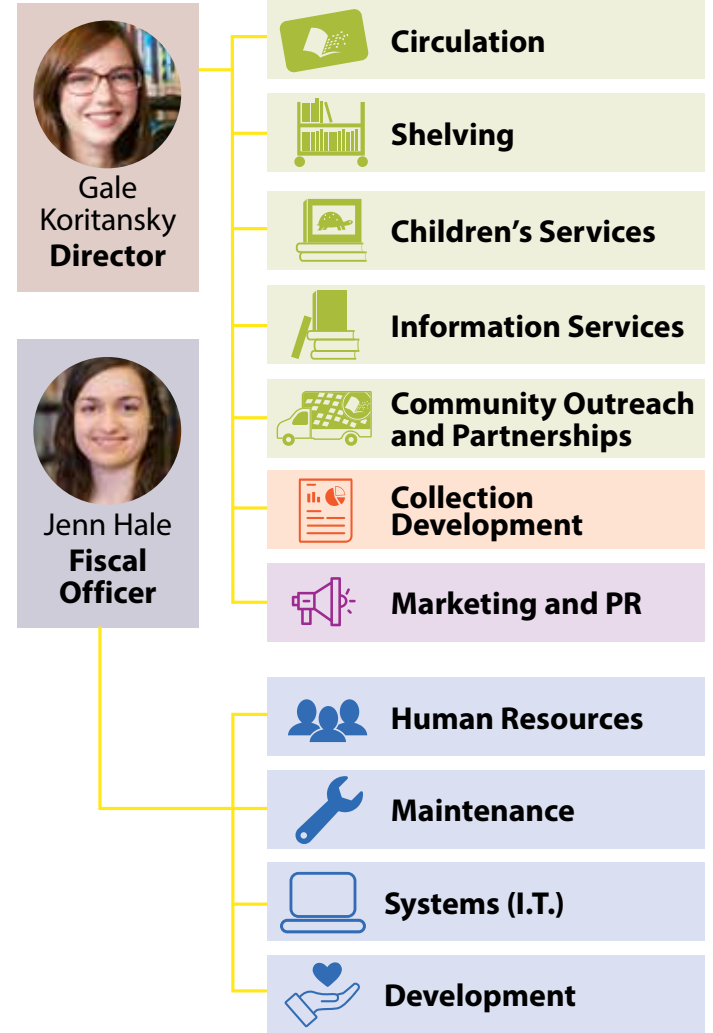
Seed Library	Podcast Kit
Gardening Tools	Left-Handed Guitar
	Portable DVD Player



### Meet the Board of Trustees

Position		Term Ends
President	Thomas A. Shubert	2027
Vice President	Craig M. Mancuso	2030
Secretary	Carla S. Wyckoff	2026
Board Member	Angela J. Daniel	2025
Board Member	Emily B. Hegner	2028
Board Member	Richard P. Bedell, CPA	2029
Board Member	Michael Jundi	2031

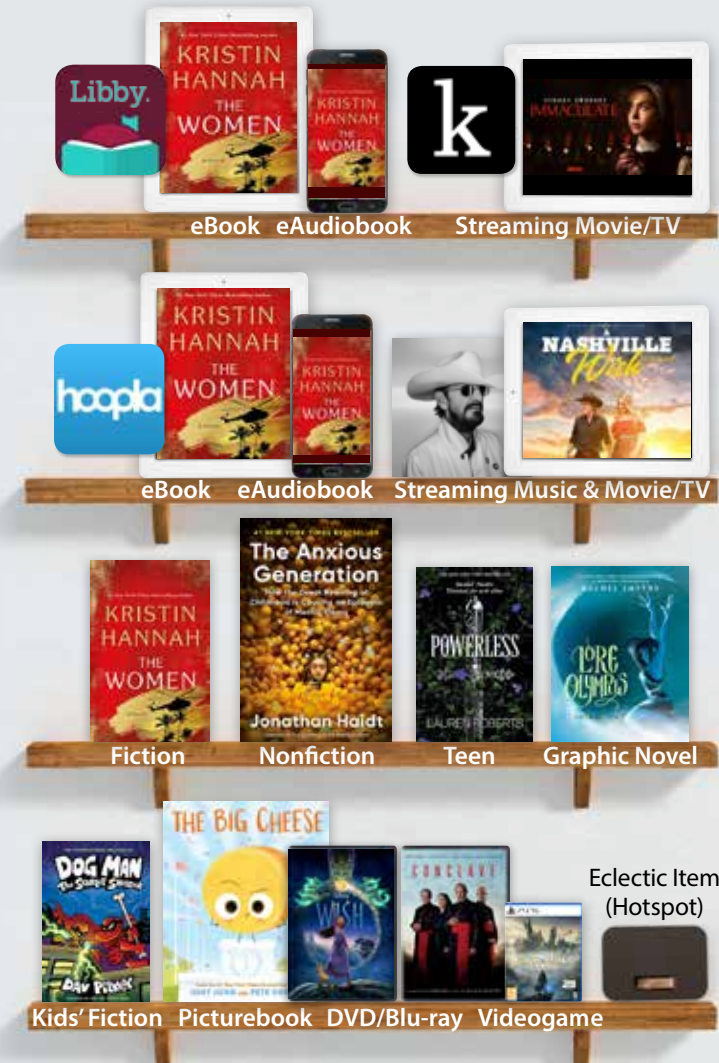
### Meet the Departments



**20,447** new items were added to the library's collection in 2024.

**NEW**

**752,865** items were borrowed in 2024.



Titles of the most popular items by category

- OverDrive** **134,506** eBook, eAudiobook, and magazine titles were downloaded.
- hoopla** **37,421** eBooks, eAudiobooks, comics, music albums, movies, and TV shows were streamed.
- kanopy** **4,919** movies and documentaries were streamed.



3512 Darrow Rd. • Stow, OH 44224  
(330) 688-3295 • www.smfpl.org

1-21-2025

2024

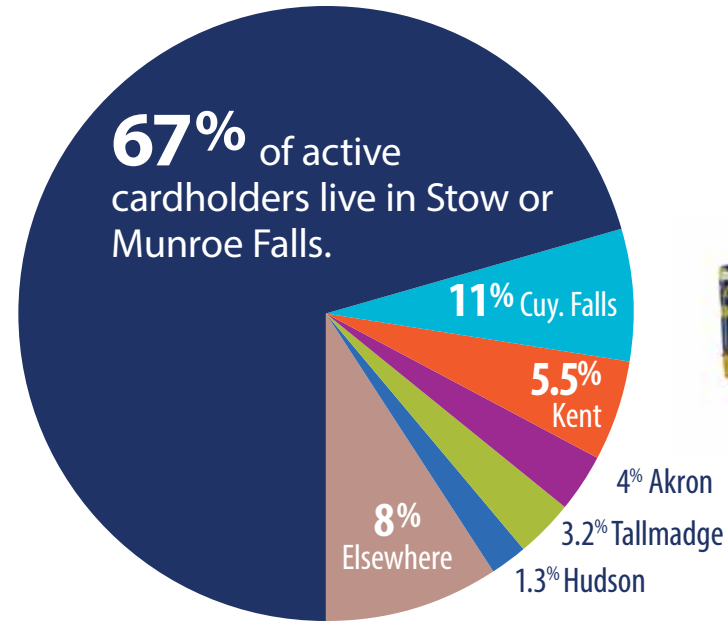
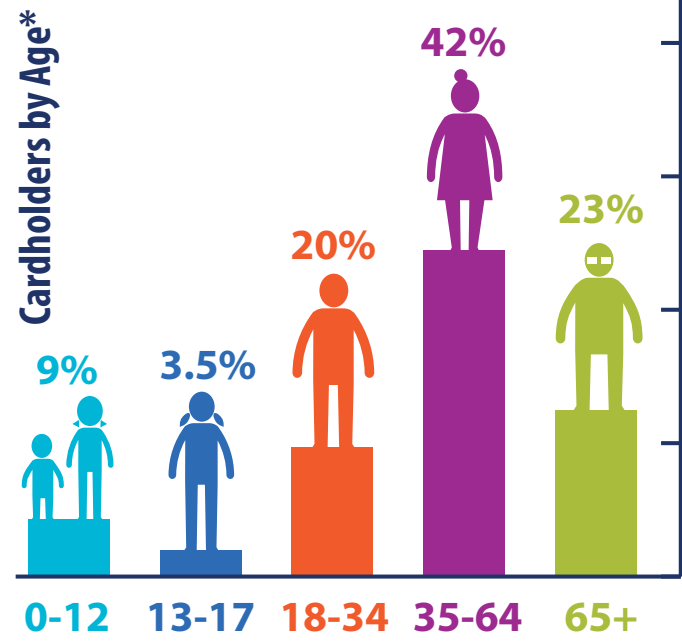
Fast Facts



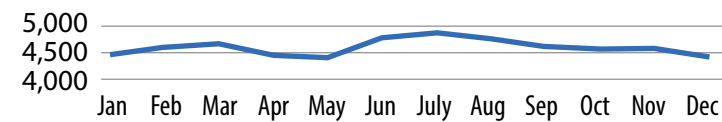


Over **1** out of **3** households in Stow and Munroe Falls (**37%**) had at least one active cardholder in 2024. The library had **159,574** visitors in 2024. On average, **453** people walked through the doors every day the library building was open.

**13,744** unique individuals used their library card in 2024.



On average, **4,597** unique patrons use their library card each month.



The library welcomed **2,566** new cardholders.

**41,907** people attended library programs. **7,210** of these people attended Story Time.

Children's outreach staff read to **5,339** participants at **12** preschools and day cares in Stow and Munroe Falls and sent **5,173** books to these facilities.

Adult outreach staff served **405** patrons at **10** separate locations (as well as private residences).



Meeting rooms were reserved by community groups **1,126** times.



Study rooms were reserved **2,800** times, and at least one room was in use any time the library was open.



**1,228** passport applications were processed.

Staff notarized **946** documents.

Patrons logged on for **15,057** computer sessions and **44,431** Wi-Fi sessions.



The library's website, [www.smfpl.org](http://www.smfpl.org), was visited **322,456** times by **108,445** unique users.

**11,352** people follow the library's Facebook, Instagram, and LinkedIn pages, and the library's social media posts were seen over **1.4 million** times.



What's new in 2024

